

**First Sunday of Christmas  
In-Person and Online Worship Bulletin  
December 29, 2024**



“Chosen Home” by Rev. Lisle Gwynn Garrity | A Sanctified Art LLC | [sanctifiedart.org](http://sanctifiedart.org)



**PEACE LUTHERAN CHURCH**

1701 E. Missouri Ave., Las Cruces, NM • (575) 522-7119

[www.peacelutheranlc.com](http://www.peacelutheranlc.com) • [office@peacelutheranlc.com](mailto:office@peacelutheranlc.com)



[www.facebook.com/peacelutheranlc](http://www.facebook.com/peacelutheranlc)



[www.youtube.com/@peacelutheranchurch1688](http://www.youtube.com/@peacelutheranchurch1688)

# Welcome to Peace Lutheran Church

## Mission Statement

**We are called to be an inclusive community, sharing God's grace through worship, service, and hospitality.**

**We of Peace Lutheran Church welcome all people to full participation in the life of the church regardless of race, ethnicity, sexual orientation, gender identity, gender expression, or physical or mental disability.**

*Children are welcome in any worship service at Peace Lutheran Church.*

**It is a pleasure to have you worship with us this week and we invite you to worship with us again soon.  
If you are in need of assistance of any kind, please speak with an usher.**

P= Presider, A= Assisting Minister, C= Congregation

**PRELUDE**

*Away in a Manger*

--Mark Blatchly (b. 1960)

⊕ ----- GATHERING ----- ⊕

**WELCOME**

**ANNOUNCEMENTS**

**\*CONFESSION AND FORGIVENESS**

P: In the prayer of confession, we acknowledge the moments when our choices do not reflect God's love and we ask for grace. We confess together, trusting that God is with us in each moment, cheering us on, and guiding us home.

*A time of silence for self-reflection.*

P: Holy God,

**C: We could offer welcome, but we often choose judgment.  
We could choose action, but we often choose silence.  
We could choose advocacy, but we often choose comfort.  
We could choose truth, but we often choose ignorance.  
We could choose God, but we often choose ourselves.**

**Forgive us, gracious God, for the moments when we chose poorly.  
Open our hearts to choose you, to choose community, to choose love.  
Gratefully we pray, amen.**

P: Family of faith, no matter how we choose, we cannot lose God's love.  
It is undeserved, overwhelming, ever-present, and always with us.  
So may we accept God's grace, and use it as fuel for better days.

Hear and believe the good news of the Gospel:  
No matter how many times we walk away, God always welcomes us home.

C: **We are loved. We are forgiven. We are invited.**  
**Thanks be to God, Amen.**

**\*GATHERING HYMN**

*Once in Royal David's City*

**ELW 269**



1 Once in roy - al Da - vid's cit - y stood a low - ly cat - tle shed,  
2 He came down to earth from heav - en who is God and Lord of all,  
3 And our eyes at last shall see him, through his own re - deem - ing love;  
4 Not in that poor low - ly sta - ble, with the ox - en stand - ing by,



where a moth - er laid her ba - by in a man - ger for his bed:  
and his shel - ter was a sta - ble, and his cra - dle was a stall;  
for that child so dear and gen - tle is our Lord in heav'n a - bove;  
we shall see him; but in heav - en, set at God's right hand on high;



Mar - y was that moth - er mild, Je - sus Christ, her lit - tle child.  
with the poor and meek and low - ly, lived on earth our Sav - ior ho - ly.  
and he leads his chil - dren on to the place where he is gone.  
there his chil - dren gath - er round, bright like stars, with glo - ry crowned.

**\*GREETING**

P: The grace of our Lord Jesus Christ, the love of God, and the communion of the Holy Spirit be with you all.

C: **And also with you.**

**\*PRAYER OF THE DAY**

A: Shine into our hearts the light of your wisdom, O God, and open our minds to the knowledge of your word, that in all things we may think and act according to your good will and may live continually in the light of your Son, Jesus Christ, who lives and reigns with you and the Holy Spirit, one God, now and forever.

C: **Amen.**

**FOR THE YOUNG AT HEART**

**Rev. Lyn Bussian**

**\*GOSPEL ACCLAMATION**

**ELW 168**

Al - le - lu - ia,      al - le - lu - ia,      al - le - lu - ia.

*The proper verse may be sung, or all may sing this verse.*

*Repeat alleluia*

Lord, to whom shall we go?      You have the words of e - ter - nal life.

**READING / GOSPEL**

**Luke 2: 1-52**

**CAROL SING**

**taking requests from ELW 268-300**

**\*NICENE CREED**

**We believe in one God,  
the Father, the Almighty,  
maker of heaven and earth,  
of all that is, seen and unseen.  
We believe in one Lord, Jesus Christ,  
the only Son of God,  
eternally begotten of the Father,  
God from God, Light from Light,  
true God from true God,  
begotten, not made,  
of one Being with the Father;  
through him all things were made.  
For us and for our salvation  
he came down from heaven,  
was incarnate of the Holy Spirit and the  
virgin Mary  
and became truly human.  
For our sake he was crucified under  
Pontius Pilate;  
he suffered death and was buried.  
On the third day he rose again**

**in accordance with the scriptures;  
he ascended into heaven  
and is seated at the right hand of the  
Father.  
He will come again in glory to judge the  
living and the dead,  
and his kingdom will have no end.  
We believe in the Holy Spirit, the Lord, the  
giver of life,  
who proceeds from the Father and the  
Son,\*  
who with the Father and the Son is  
worshiped and glorified,  
who has spoken through the prophets.  
We believe in one holy catholic and  
apostolic church.  
We acknowledge one baptism for the  
forgiveness of sins.  
We look for the resurrection of the dead,  
and the life of the world to come.  
Amen.**

**\*PRAYERS OF THE PEOPLE**

A: God of grace,  
C: **Receive our prayer.**

Saints of Peace:

**Ingeborg** Frederickson, **Virginia** Halvorson, **Laura** Roach, **Rev. H.L.W.** Schuetz,  
**Walter** Majors, **Richard** Husson

P: We commend these prayers to you, O God, trusting your grace made known to all,  
through the Word made flesh, Jesus Christ, our Savior and Lord.

C: **Amen.**

**\*THE SHARING OF THE PEACE**

P: The peace of the Lord be with you always.

C: **And also with you.**

*In-Building: Please share signs of peace in whatever way you are comfortable and  
is respectful of your neighbor's comfort level.*

*Online: You may share greeting of peace in the chat.*



**OFFERING**

*Gifts for the work and ministry of Peace Lutheran Church can be placed in the offering  
plates or mailed to the Church Office or sent through on-line giving on our website.*

**OFFERTORY MUSIC**

*Cantilena on 'Mendelssohn'*

*--James Biery (b.1956)*

**\*OFFERTORY**

*Doxology*

**Thomas Tallis, c. 1567**

Praise God from whom all blessings flow; praise him, all creatures here be - low;  
praise him a - bove, ye heav'nly host: praise Fa - ther, Son, and Ho - ly Ghost. A - men.

**\*OFFERTORY PRAYER**

A: Gracious God,

C: **Your story is one that forever invites us  
to be our full selves,  
to take up space,  
to go where we feel called,  
and to allow this community to feel like home.  
So use these gifts to keep building your home here.  
With gratitude we pray. Amen.**

**\*THE GREAT THANKSGIVING**

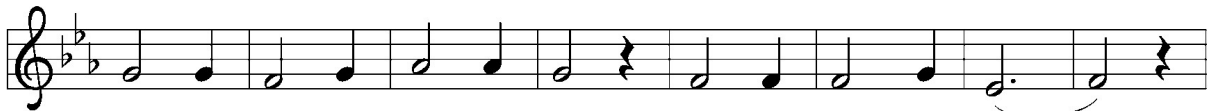
P: The Lord be with you!  
C: **And also with you!**  
P: Lift up your hearts!  
C: **We lift them to the Lord!**  
P: Let us give thanks to the Lord our God!  
C: **It is right to give God thanks and praise!**

**\*PREFACE**

P: It is indeed right, our duty and our joy,  
that we should at all times and in all places  
give thanks and praise to you, almighty and merciful God,  
through our Savior Jesus Christ.  
In the wonder and mystery of the Word made flesh  
you have opened the eyes of faith  
to a new and radiant vision of your glory,  
that, beholding the God made visible,  
we may be drawn to love the God whom we cannot see.  
And so, with all the choirs of angels,  
with the church on earth and the hosts of heaven,  
we praise your name and join their unending hymn:

**\*HOLY, HOLY, HOLY**

**ELW 190**



Ho - ly, ho - ly, ho - ly Lord, God of pow'r and might,



ho - ly, ho - ly, ho - ly Lord, God of pow'r and might,



heav-en and earth are full, full of your glo - ry.



Ho - san - na in the high - est, ho - san - na in the high - est.



Bless-ed is he who comes in the name of the Lord.



Ho - san - na in the high - est, ho - san - na in the high - est.

## \*WORDS OF INSTITUTION

### \*THE LORD'S PRAYER

**C:** Our Father in Heaven  
hallowed be your name,  
your kingdom come,  
your will be done,  
on earth as in heaven.  
Give us today our daily bread.  
Forgive us our sins  
as we forgive  
those who sin against us  
Save us from the time of trial  
and deliver us from evil.  
For the kingdom, the power,  
and the glory are yours,  
now and forever. Amen.

Padre nuestro que estás en el Cielo,  
santificado sea tu nombre,  
venga a nosotros tu Reino,  
hágase tu voluntad  
en la Tierra como en el Cielo.  
Danos hoy nuestro pan de cada día.  
Perdona nuestras ofensas,  
como también  
perdonamos a los que nos ofenden.  
No nos dejes caer en tentación,  
y líbranos del mal.  
Porque tuyo es el Reino, tuyo el Poder,  
y tuya la Gloria,  
ahora y siempre. Amén.

### INVITATION TO COMMUNION

*All are invited to the Lord's table for communion, regardless of age or church membership. Come forward up the center aisle, taking an empty cup from the tray at the front. Follow the direction of the ushers and kneel or stand at the rail. The Bread Minister will hand you a piece of bread (gluten-free wafers are available, just ask the bread minister). There are two Wine Ministers. The first pouring chalice offers wine and the second chalice is grape juice.*

*If you choose not to receive communion, you may come forward for a blessing from the Bread Minister. Crossing your arms over your chest will indicate that you would prefer a blessing.*

*If you have difficulty coming to the front, please notify an usher and communion will gladly be brought to you.*

### \*LAMB OF GOD

ELW 199



Je - sus, Lamb of God, have mer - cy on us.



Je - sus, bear - er of our sins, have mer - cy on us.



Je - sus, re - deem - er, re - deem - er of the world,



grant us peace, grant us peace.

**COMMUNION MUSIC**

*Cradle Song*

--Malcom Archer (b. 1952)

**\*BLESSING FROM THE TABLE**

**\*PRAYER OF THANKSGIVING**

A: Merciful God,  
 C: **we thank you for Jesus, who is our heavenly food.**  
**Strengthened by this goodness,**  
**send us forth to announce your peace,**  
**comfort the afflicted,**  
**and share the good news of great joy.**  
**Amen.**

⊕ -----SENDING----- ⊕

**\*THE BENEDICTION**

P: As you leave *this* service, *your* service begins:  
 Comfort the homesick.  
 Open your doors to others.  
 Seek sanctuary.  
 Be brave enough to go home by another way.  
 And remember that here in God's house, all are welcomed—so come back soon.  
 In the name of our Foundation—God, Spirit, and Son ⊕ —  
 go in peace.  
 C: **Amen**

**\*SENDING HYMN**

*Joy to the World*  
(see insert)

**ELW 267**

**\*DISMISSAL**

A: Go in peace. The Word of God dwells in you richly.  
 C: **Thanks be to God.**

**POSTLUDE**

*Antioch*

--Mary Beth Bennett (b. 1954)

Peace values music highly, so some may choose to remain in the sanctuary for the postlude.  
 Others may choose to leave quietly at that time.  
 All are welcome to gather in the Fellowship Hall for coffee and fellowship.

Other Music and Musical Text in this document reprinted with permission. OneLicense net # A-706069 and CCLI #3108714.  
 From Sundays and Seasons.com. Copyright 2024 Augsburg Fortress. All rights reserved.  
 Reprinted by permission under Augsburg Fortress Liturgies Annual License #36190.  
 Scripture quotations are from the New Revised Standard Version Bible, copyright ©1989,  
 Division of Christian Education of the National Council of the Churches of Christ in the United States of America.  
 Used by permission. All rights reserved.

**Ministers and Staff**

The Congregation Members of Peace Lutheran Church  
 Rev. Hannah DiPasquale, Pastor  
 Sandy Johnson, Office Administrator (office@peacelutheranlc.com)  
 Jieun Newland, Music Minister  
 Tommy Grimes, Custodian





1 Joy to the world, the Lord is come! Let earth re -  
 2 Joy to the earth, the Sav - ior reigns! Let all their  
 3 No more let sin and sor - row grow nor thorns in -  
 4 He rules the world with truth and grace and makes the



ceive her king; let ev - 'ry heart pre - pare him  
 songs em - ploy, while fields and floods, rocks, hills, and  
 fest the ground; he comes to make his bless - ings  
 na - tions prove the glo - ries of his righ - teous -



room and heav'n and na - ture sing, and heav'n and na - ture  
 plains re - peat the sound - ing joy, re - peat the sound - ing  
 flow far as the curse is found, far as the curse is  
 ness and won - ders of his love, and won - ders of his



sing, and heav'n, and heav'n and na - ture sing.  
 joy, re - peat, re - peat the sound - ing joy.  
 found, far as, far as the curse is found.  
 love, and won - ders, won - ders of his love.

**Worship Assistants - TODAY**

Assisting Minister: Diana Diemer  
 Lectors: Diana Diemer, Dan Diemer  
 David Owens, Cindy Kendrick  
 Greeter: \_\_\_\_\_  
 Communion Server: \_\_\_\_\_  
 Ushers: \_\_\_\_\_  
 Technology (3): \_\_\_\_\_, \_\_\_\_\_  
 Sandy Johnson, Mary Luckie  
 Altar Care: Susan Yarne  
 Bulletins: Barb Patton, Deb Sarabia

**Worship Assistants - January 5**



Assisting Minister: Ryan Cull  
 Lector: \_\_\_\_\_  
 Greeters: \_\_\_\_\_  
 Communion Server: \_\_\_\_\_  
 Ushers: \_\_\_\_\_, \_\_\_\_\_  
 Technology (3): \_\_\_\_\_, \_\_\_\_\_  
 Karen Harvey, Mary Luckie,  
 Kathie Rich  
 Altar Care: Cindy Peterson  
 Bulletins: Barb Patton, Deb Sarabia

**ANNOUNCEMENTS - December 29**

If you have Prayer Requests to be included in the Prayers of the Day, please write them before the service on the Prayer Request sheet found on the stand in the narthex.

**THANK YOU to all who made our Advent & Christmas season special.** Bulletin folders, soup makers, treat servers, bell ringers, choir singers, ushers, greeters, candle lighters, alter carers, camera operators, sound button pushers, poinsettia sponsors... ALL of you (and anyone missed from this list!) made this season meaningful for our community at Peace. And a special thank you to our office administrator Sandy for her tireless navigation of multiple services and building use requests; as well as to our financial team with end-of-the-year projects. All glory to God!

**Worship Planning Meeting** - Wednesday, January 8th, 6:30pm. Pr Hannah will be hosting a meeting to plan worship for spring/Lent/Easter. If you have ideas to share, or just want to be a part of the conversation, please plan to join us! This meeting is open to anyone from the congregation. Feel free to bring dinner with you. Zoom can be available, reach out to Pr Hannah or the office if you'd like to Zoom into the meeting.

 **Green Team Tip**  **Do you still have the Christmas cards your family and friends sent you?** Cut out the decorative parts to use for gift tags next year! Or just save them for next year's Green Team Christmas Card to Gift Tag Craft Event!

**Christmas Poinsettias you purchased may be taken home,**

| <b><u>SCHEDULE - December 29-January 5</u></b> |                                  |                            |
|--|----------------------------------|----------------------------|
| <b>Dec. 25-Jan. 4</b>                          | <b>Pastor Hannah on vacation</b> |                            |
| Sun., Dec. 29                                  | 9:00 a.m.                        | Sunday Worship             |
|  | 10:00 a.m.                       | Coffee Hour                |
| Tues.-Wed., Dec. 31-Jan. 1                     | OFFICE CLOSED                    |                            |
| Thurs., Jan. 2                                 | 1:00 p.m.                        | Alzheimer's Support Group  |
| Fri., Jan. 3                                   | 3:30 p.m.                        | BSC Immersion Presentation |
| Sun., Jan. 5                                   | 9:00 a.m.                        | Sunday Worship             |
|  | 10:00 a.m.                       | Coffee Hour                |
|  | 10:15 a.m.                       | Taking Down the Greens     |
| +++++  |                                  |                            |
| OA - Overeaters Anon:                          | 9:30 a.m.                        | - Sa                       |
| AA - Downtown Group:                           | 5:30 p.m.                        | - Su, M, Tu, Th, F, Sa     |
|  | 7:00 p.m.                        | - W                        |
|  | 8:00 p.m.                        | - Sa                       |
| AA - Primary Purpose:                          | 7:00 p.m.                        | - F                        |